

CIHE/CBCC NEWSLETTER



CIHE Headline - Promising Career Prospects for Nursing Graduates

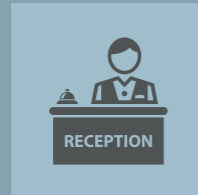
Graduated in June 2019, the first batch of 111 nursing graduates from Bachelor of Nursing programme all successfully entered the healthcare sector. According to the graduate employment survey conducted by the School of Health Sciences, vast majority (95%) of the graduates are employed by the Hospital Authority as Registered Nurses (RN), while the remaining 3% are working in private healthcare organisations. With promising career prospects, graduates receive an average starting salary of HK\$33,000.

The increase in subsidised places from 200 to 360 under the Study Subsidy Scheme for Designated Professions/Sectors (SSSDP) allows more DSE graduates who are determined to be professional nursing practitioners to study for an accredited nursing programme offered by Caritas Institute of Higher Education (CIHE) with affordable tuition fee. After the deduction of SSSDP subsidy, the annual tuition fee paid by eligible students will be HK\$36,860 in 2020/21.



Latest News - New Programmes under the Support of SSSDP

Four Higher Diploma programmes offered by Caritas Bianchi College of Careers (CBCC) are now under the support of Study Subsidy Scheme for Designated Professions/Sectors (SSSDP). Eligible students of Higher Diploma in Hospitality Management, Higher Diploma in Design, Higher Diploma in Pharmaceutical Dispensing and Higher Diploma in Health Care programmes can receive the annual subsidy amount of \$37,300 or \$21,400 in the 2020/21 academic year. The subsidy amounts and tuition fee (before and after netting off the subsidy amounts) of respective programmes are as follows:



Higher Diploma
in Hospitality
Management



Higher Diploma
in Design



Higher Diploma in
Pharmaceutical
Dispensing



Higher Diploma
in Health Care

	Higher Diploma in Hospitality Management	Higher Diploma in Design	Higher Diploma in Pharmaceutical Dispensing	Higher Diploma in Health Care
2020/21 Annual subsidy amounts	\$21,400	\$37,300	\$37,300	\$37,300
2020/21 Tuition fee (Year 1)	\$61,520	\$68,540	\$65,030	\$63,500
2020/21 Tuition fee after deduction of subsidy	\$40,120	\$31,240	\$27,730	\$26,200



Alumni Story - Classic Anew

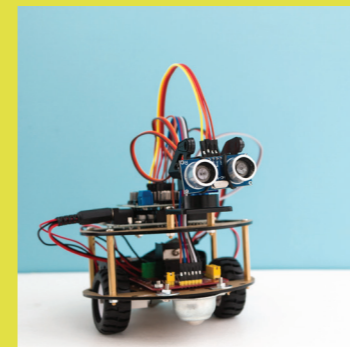
Janko Lam, graduate of the Higher Diploma in Design programme (Fashion Design), is the founder of the local brand "Classics Anew" (新裝如初). After graduation from CBCC, she worked as a drama costume designer at TVB. However, with her passion to establish her own brand, she later quitted the job and worked freelance to devote more time to start her business. During that time, Janko earned exposure for her works by actively joining flea markets and regularly visited garment factories in China to observe and learn sewing skills. She also recycled denim pieces, and she would never have imagined that it would become one of the key elements of her future fashion brand.

Janko's hard work has paid off. With her love for Chinese costumes, she successfully turned unused denim into qipao, traditional Chinese dresses which require exquisite craftsmanship, and launched the brand "Classics Anew". By recreating Chinese aesthetics with contemporary styles, Janko aims to pass on traditional qipao craftsmanship skills as well as keeps the ancient tradition and culture alive.



CIHE Ethnic Minority Graduate was Nominated as "Outstanding Young Person"

Jeffrey Andrews, graduate of Social Work programme, was nominated as one of the "Ten Outstanding Young Persons" in 2019. Jeffrey is the first ethnic minority social worker in Hong Kong and now works at a non-profit organisation Christian Action. As many other ethnic minorities, Jeffrey faced identity crisis during his youth. However, with perseverance, he successfully overcame life challenges and learning difficulties. CIHE would like to extend our warmest congratulations to Jeffrey!



Research Funding for Establishment of Artificial Intelligence Laboratory

In 2019/20, CIHE received research funding with the amount of HK\$2,713,880 from the Institutional Development Scheme (IDS). The three-year project "Establishment of Distributed Artificial Intelligence Laboratory for Interdisciplinary Research" will be led by the School of Computing and Information Sciences. The establishment of AI laboratory aims to facilitate deep learning and interdisciplinary AI research across different schools and departments.